

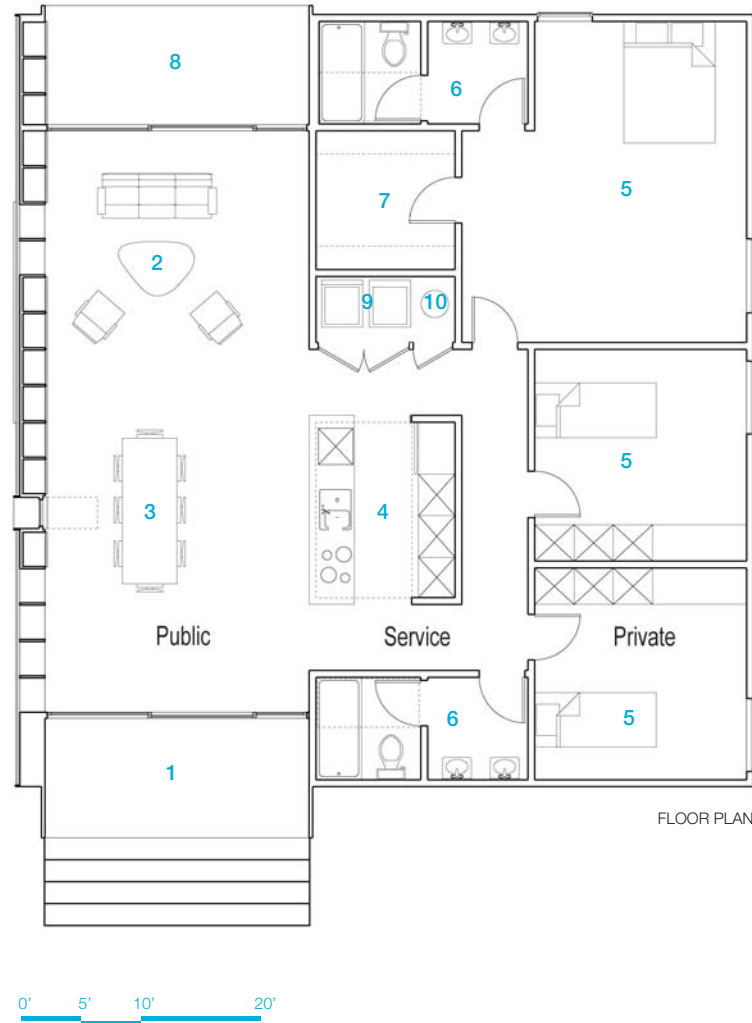


a web-based modern home design delivery service. visit [Hometta.com](http://Hometta.com)

## Lantern House

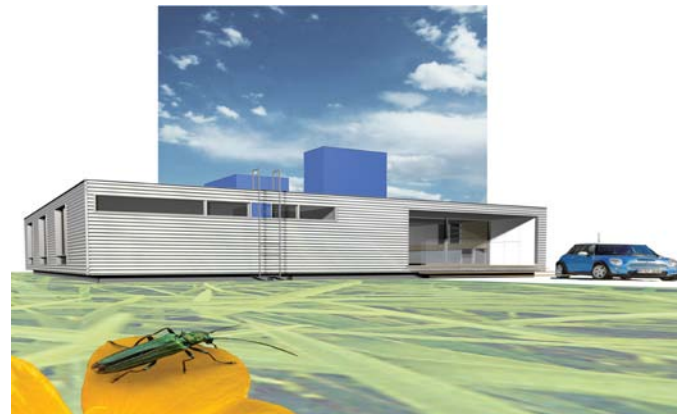
Lantern House proves that good things do come in small packages. Elegant and efficient, the house is organized in three parallel bands of space: public, service and private. A great room for family gathering occupies the public band which opens through oversized sliding glass doors to porches at the front and back. This space is served along one side by a continuous wall of cabinets for both closed storage and open display. Expanded polycarbonate cladding admits a diffuse light through areas of open shelving in this wall. The service zone, with the kitchen at its center, functions as both a hinge and a buffer between the public and private spaces. Book-ended by two bathrooms, this central band is top lit by three lanterns that also aid in the natural cooling of the house. The private band accommodates one large master bedroom and two smaller bedrooms with built in storage and work areas. The Lantern House's simple yet sophisticated plan belies its modest square footage, offering an airy public room for entertaining, ample storage, and quiet spaces for personal retreat.

Room	1st Floor
Living / Dining	551 ft <sup>2</sup>
Kitchen	87 ft <sup>2</sup>
Bedroom 1	132 ft <sup>2</sup>
Bedroom 2	132 ft <sup>2</sup>
Bathroom 1	69 ft <sup>2</sup>
Master Bedroom	258 ft <sup>2</sup>
Master Bathroom	68 ft <sup>2</sup>



**1,695 SF**  
3 bedrooms  
2 bathrooms

- 1\_Entry / Foyer
- 2\_Living / Family
- 3\_Dining
- 4\_Kitchen
- 5\_Bedroom
- 6\_Bathroom
- 7\_Closet
- 8\_Deck / Porch
- 9\_Laundry
- 10\_Mech.



## Keith Krumwiede

Keith Krumwiede is an educator, writer and designer. He has taught at Otis College of Art and Design, Konstfack University College of Arts, Crafts and Design, Rice University and is currently Assistant Dean and Associate Professor at the Yale School of Architecture where he was awarded the King-Lui Wu Award for Distinguished Teaching. He has written about the sub-networks and porous enclaves of Los Angeles, the almost viral annexations pattern of Texas cities, and the sophisticated and sinister practices of homebuilders. He is currently working on Gross Domestic Product, a book about the recent history of the ultimate American consumer product, the single family house. He has designed furniture, books, installations, and buildings (along with several urban plans). His current grant-supported design work is focused on the development of sustainable, climate-responsive, high-density urban housing prototypes.