



a web-based modern home design delivery service. visit Hometta.com

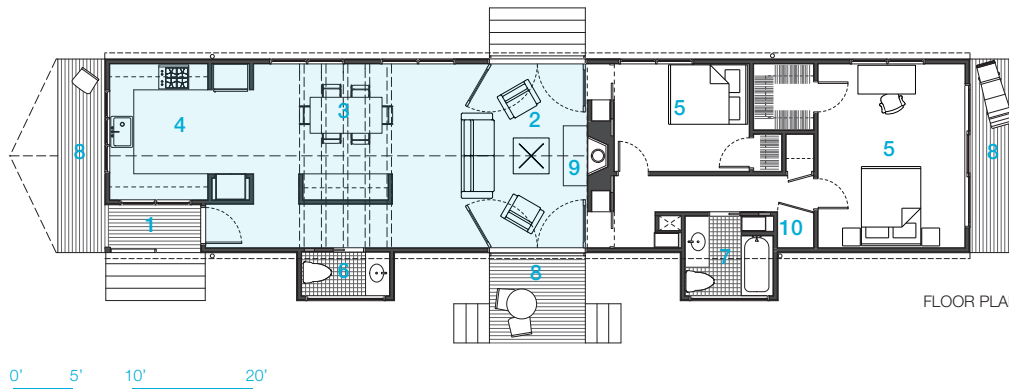
Shot-trot

The Shot-trot is a one-story wood-frame house designed to incorporate an economy of construction; the dimensions of the home are based on standard materials complemented with off the shelf components.

As its name suggests, the Shot-trot is inspired and derived from a conflation of two Southern house types raised off the ground: the long and narrow shotgun cottage and the dogtrot that opens itself to the landscape. The Shot-trot merges the old and the new into a modern hybrid.

One side of the house has two connected core boxes (bathrooms) that break the purity of the home's rectangular form. A half bath services kitchen, dining and living room, all open to each other under a single vaulted space. The full bath services two bedrooms with 10-foot ceilings. Levels of light, air and circulation are easily regulated to the changing demands of both climate and inhabitant.

Room	1st Floor
Entry	70 ft ²
Living	195 ft ²
Dining	170 ft ²
Kitchen	134 ft ²
Bedroom 1	215 ft ²
Bedroom 2	110 ft ²
Bathroom	48 ft ²



1,200 SF (20'x 80')
2 bedrooms
1.5 bathrooms

- 1_Entry / Foyer
- 2_Living / Family
- 3_Dining
- 4_Kitchen
- 5_Bedroom
- 6_Powder
- 7_Bathroom
- 8_Porch / Deck
- 9_Fireplace
- 10_Washer / Dryer



Brett Zamore Design

Brett Zamore Design believes that a designer should be sensitive to surrounding conditions—mindful of the past, the present, and the ever-changing modern world. The office designs efficient, affordable and practical structures, and creates architecture with a clarity and simplicity that transcends the traditional understanding of our built environment.