

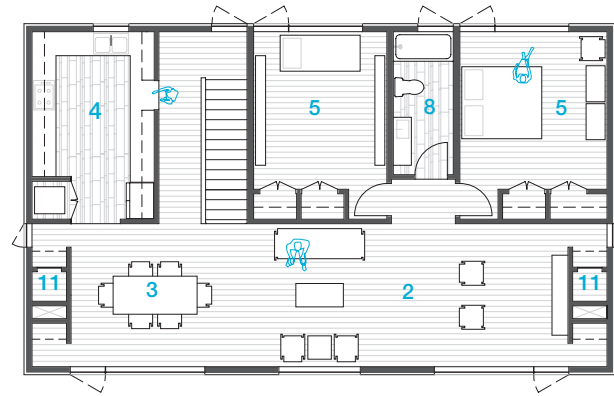


a web-based modern home design delivery service. visit Hometta.com

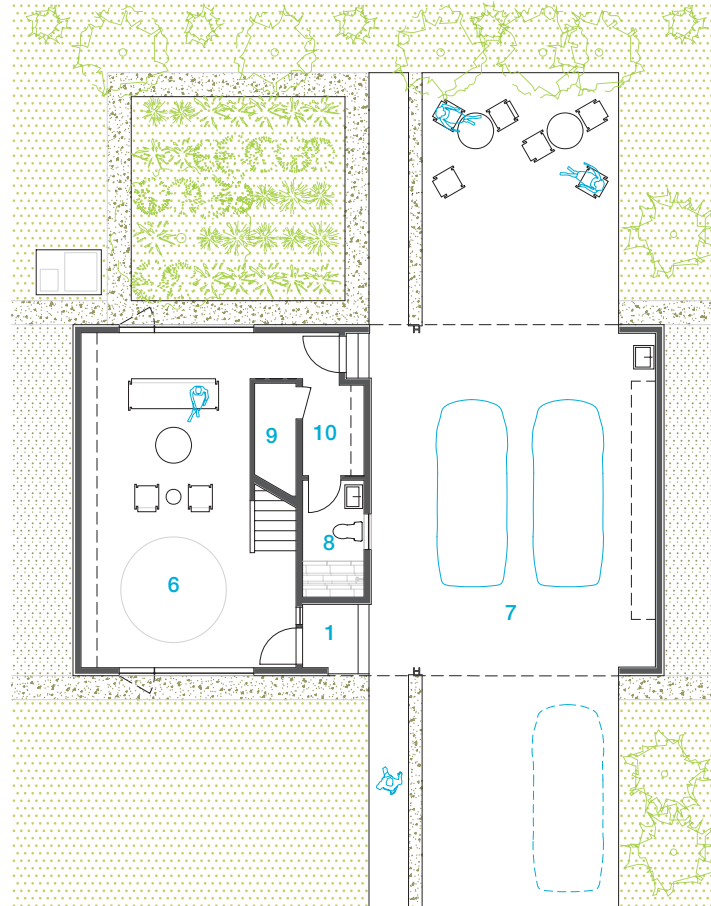
48' House

48' House is a modest, two-story single-family residence designed to accommodate the changing lifestyle needs of a young professional family. This spacious modern home does this by splitting public and private functions into two discreet levels. The ground floor consists of a generous home-office and an open carport that also serves as an outdoor room for entertaining. Two large windows provide views to front and back exterior gardens. The result is an airy and inviting work space that could easily be used as a play room, formal living room, or library. This versatile room has stained concrete floors and is supported by a large storage closet, a mud room with built-in cabinets, and a bathroom.

2,085 SF
2 bedrooms
2 bathrooms



SECOND FLOOR PLAN



- 1_Entry / Foyer
- 2_48' room / Living
- 3_Dining
- 4_Kitchen
- 5_Bedroom
- 6_Office / Den / Studio
- 7_Car port
- 8_Bathroom
- 9_Utility
- 10_Mud room
- 11_Mech.

0' 5' 10' 20'

GROUND FLOOR PLAN

Room	1st Floor	2nd Floor
Office / Den	463 ft ²	—
Bathroom	51 ft ²	—
Living / Dining	—	524 ft ²
Kitchen	—	161 ft ²
Bedroom 1	—	156 ft ²
Master Bedroom	—	172 ft ²
Bathroom	—	60 ft ²



© Daniel Hennessey Photography

Welcome to **48' House** — a two-story stair leads up to the primary living space. The stair enters into an open, flexible 48' room that accommodates dining, living, and lounging. Three large windows bring natural (north) light and ventilation into this space. This arrangement allows for both privacy and spectacular views through the treetops, into the front yard and the neighboring community. Two convenient reach-in closets are concealed at both ends of the 48' room for storage (pantry, linens, coats, etc.). A generous U-shaped kitchen opens onto the dining area and contains a stackable washer/dryer closet enclosed with custom perforated doors. A counter height pass-through allows visibility from the kitchen to the entry stair and serves as a drop-off area for groceries and small day-to-day items. Two bedrooms—each with a large window assembly and two reach-in closets—share one full bathroom. Kitchen and bathroom floors are slate. The remaining floor area is stained and sealed 2" x 6" tongue and groove pine decking. 48' House is an efficient and inventive design that supports flexible living and a dynamic work environment in a clean, modern aesthetic.



All content © Hismetta
All rights reserved.



© Paul Hester



© Daniel Hennessey Photography

Interloop — Architecture

Interloop—Architecture is a small design and production firm located in Houston, Texas. It was founded in 2001 by principals Dawn Finley and Mark Wamble. Their work is diverse—divided equally between design projects (that range in scale, type, and complexity) and production-related problem solving. Their clients include institutions such as The Nasher Foundation; The Carnegie Museum of Art; Netherlands Architecture Institute; Howard Hughes Medical Institute and Rice University; multinational corporations such as BP; and private individuals.