

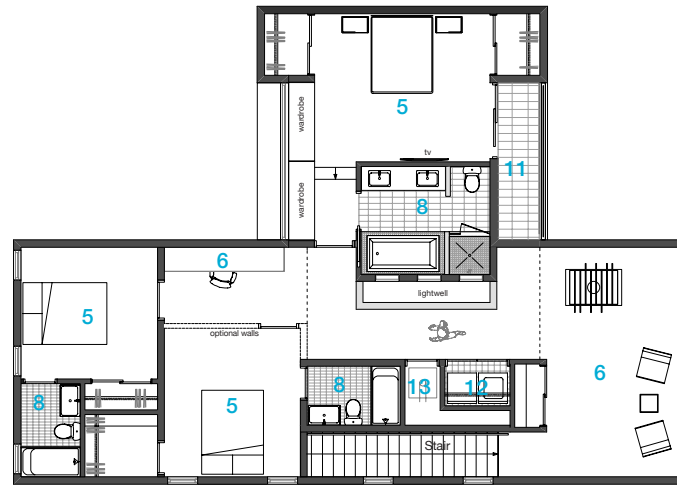


a web-based modern home design delivery service. visit [Hometta.com](http://Hometta.com)

## Binary House

The Binary House explores several simple dualities of modern living: flexible open spaces with user-defined areas, abundant natural lighting without excessive heat gain, and a strong relationship to the exterior without sacrificing privacy. These dualities inform the basic interlocking masses of the building and the spaces within. The house's exterior is an interplay of solid and void, coded with specific material designations. The Binary House intentionally relies upon common construction methods and readily available materials used in inventive ways to address the unique design challenge of the Hometta project delivery method. The house is relatively simple to construct without specialized labor and adaptable to many geographic and climatic conditions. The Binary House is designed for a comfortable, modern lifestyle in an efficient house that is easily built and uncomplicated to live within.

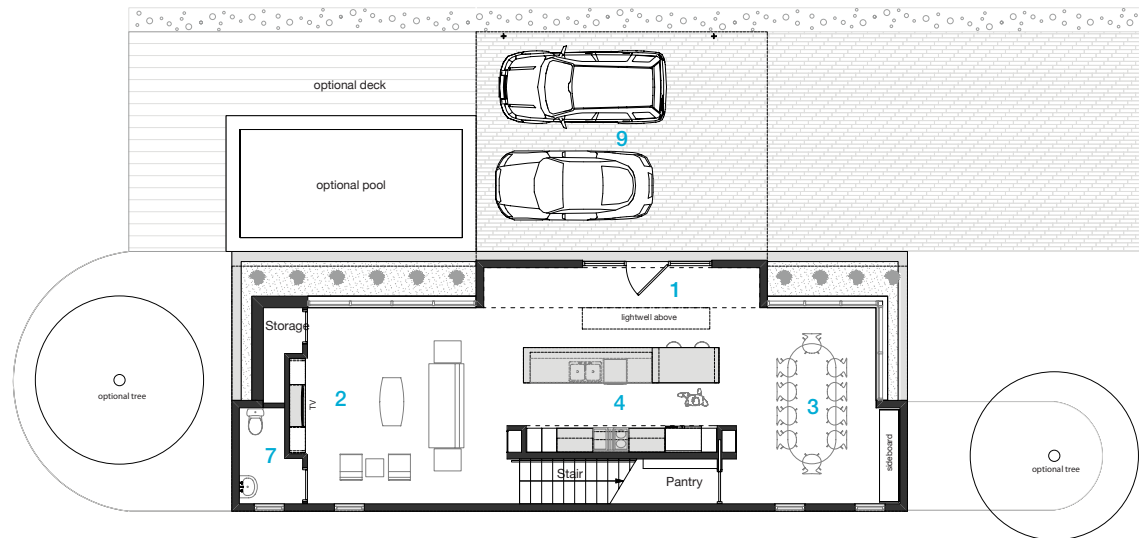
**2,480 SF**  
3 bedrooms  
2.5 bathrooms



- 1\_Entry / Foyer
- 2\_Living / Family
- 3\_Dining
- 4\_Kitchen
- 5\_Bedroom
- 6\_Den / Office / Studio
- 7\_Powder
- 8\_Bathroom
- 9\_Carport / Garage
- 10\_Loft
- 11\_Porch / Deck
- 12\_Laundry
- 13\_Mech.

SECOND FLOOR PLAN

Room	1st Floor	2nd Floor
Entry	80 ft <sup>2</sup>	—
Living	280 ft <sup>2</sup>	—
Dining	205 ft <sup>2</sup>	—
Kitchen	220 ft <sup>2</sup>	—
Den	—	250 ft <sup>2</sup>
Master Bedroom	—	235 ft <sup>2</sup>
Bedroom 1	—	140 ft <sup>2</sup>
Bedroom 2	—	125 ft <sup>2</sup>
Office	—	75 ft <sup>2</sup>



0' 5' 10' 20'

GROUND FLOOR PLAN



As you approach the **Binary House**, you see the strikingly dynamic volumes of stucco and glass accented with brick and wood siding. The entry door lies protected beneath an expansive 2nd story overhang. The first of many multiple use spaces, this area functions primarily as a car-port but also makes for a fabulous covered outdoor room that can be used in concert with a rear yard for entertaining.

The ground floor level serves as a perfect example of open plan living with a streamlined cook's kitchen nestled between the living and dining areas. Overall the first floor creates an ideal space for family and friends. The generous expanses of glass protected by strategic overhangs ensure natural daylight will fill the space from multiple exposures without harsh direct sun.

The stairs to the upper level are tucked behind the kitchen and lead to a large multi-purpose room which is the focus of the family-oriented spaces on the 2nd level. This room could be a playroom, game room, home theater or lounge. The hall leading to the bedrooms features a vaulted ceiling with clerestory windows that fills this transition space with natural light which also filters down to the first level entry. The owner's suite features a 12' tall ceiling, multiple closets and built-in storage, and a private outdoor terrace. The efficient planning and compact form of the Binary House offer exceptional livability and value in a crisp modern package.

## Collaborative Designworks

Collaborative Designworks was established in 2003 by James M. Evans, AIA, as a design focused architecture firm interested in orchestrating the varied conditions, requirements, and personalities involved in projects towards a common goal—the successful completion of built work. This interest has led the firm to expand its role in projects beyond that of exclusively Architect and into developer, furniture designer, and small scale builder. Completed projects to date range from single and multi-family residential to commercial buildings and from generous budgets to the highly limited cost parameters required for speculative developments; all with the belief that design can happen at various scales and should happen for all projects. One of Collaborative Designworks' recently completed projects has received a LEED silver certification.

