



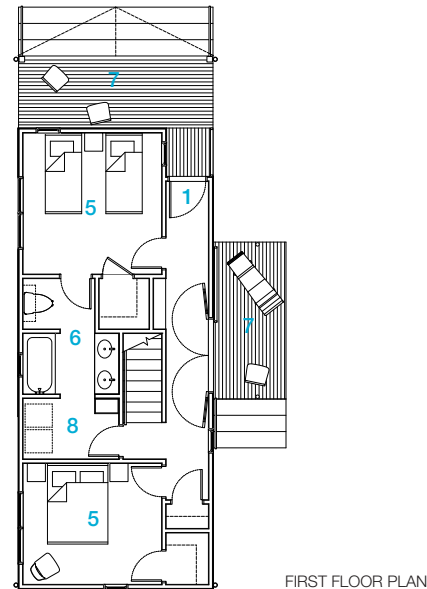
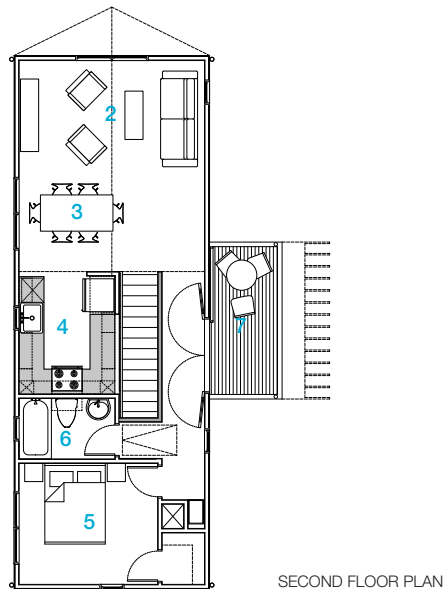
a web-based modern home design delivery service. visit Hometta.com

up+dn

Similar to the Shot-trot, the up+dn is a two-story wood-frame house designed to incorporate an economy of construction. As its name suggests, the house flips the traditional understanding of a 2-story house; its kitchen, dining and living room and third bedroom or office are located on the second floor while its main bedrooms, bath and mud room are located on the first floor. This allows the public second floor space to have a vaulted ceiling that increases the overall feeling of space while offering outward distant views.

Affordability of construction and long term efficiency are keys to the up+dn home's success. Its affordability lies in the simple assembly of standard wood frame components and modest, building materials and finishes. Materials are chosen to be environmentally friendly, affordable and durable. Two floors promote a smaller footprint and foundation and help reduce cost of construction. The centrally located bathrooms and kitchen share common vertical plumbing walls that increase efficiency. The up+dn is perfect for the modern and environmentally conscious enthusiast wanting a home.

Room	1st Floor	2nd Floor
Living	-	190 ft ²
Dining	-	80 ft ²
Kitchen	-	77 ft ²
Bedroom 1	150 ft ²	-
Bedroom 2	130 ft ²	-
Bedroom 3	-	130 ft ²
Bathroom 1	-	-
Bathroom 2	65 ft ²	40 ft ²
Laundry	40 ft ²	-



1,300 SF
3 bedrooms
2 bathrooms

- 1_Entry / Foyer
- 2_Living / Family
- 3_Dining
- 4_Kitchen
- 5_Bedroom
- 6_Bathroom
- 7_Porch / Deck
- 8_Laundry



Brett Zamore Design

Brett Zamore Design believes that a designer should be sensitive to surrounding conditions—mindful of the past, the present, and the ever-changing modern world. The office designs efficient, affordable and practical structures, and creates architecture with a clarity and simplicity that transcends the traditional understanding of our built environment.