

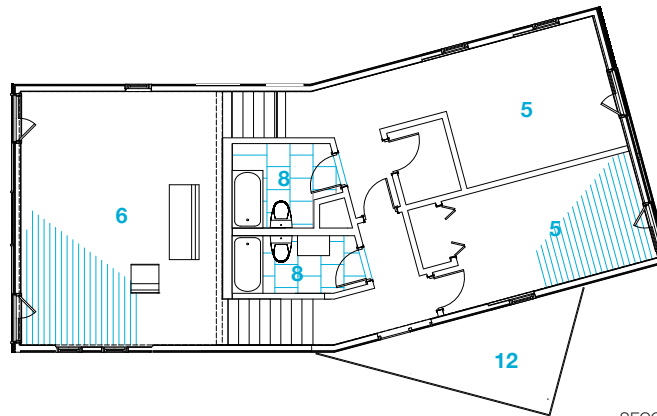


a web-based modern home design delivery service. visit Hometta.com

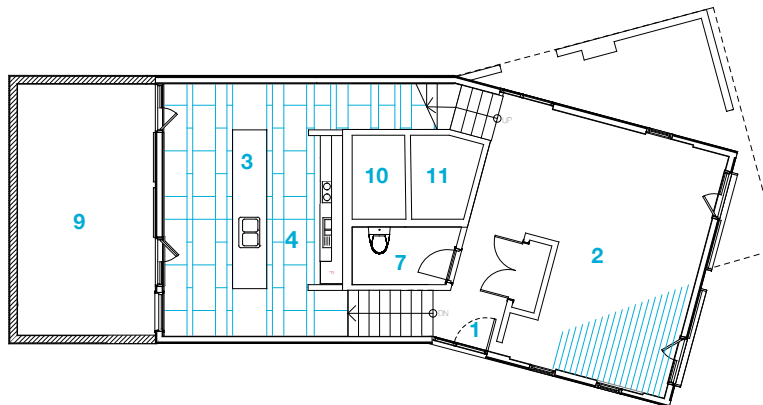
Crank House

Crank House takes a simple stacked program and shifts both the living and sleeping areas to create a porch on the entry level, and a small roof deck for the uppermost floor. The house also challenges the idea of a siteless prototype, which is typically designed for a flat terrain. In this case, the house uses half levels, giving it the possibility of being constructed on a sloped site. Alternately, it can be grounded on a flat site with the kitchen sunken a half level into the earth and opening onto a private court for reading, al fresco dining, or entertaining.

2,439 SF
2 bedrooms
3 baths
office

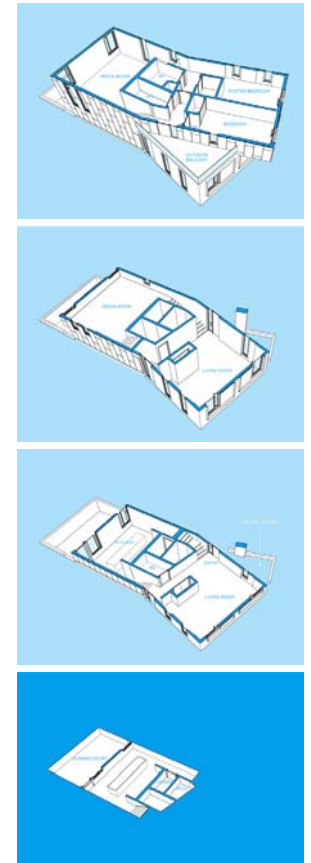


SECOND FLOOR PLAN



FIRST FLOOR PLAN

Room	Level 1	Level 2	Level 3	Level 4
Living	—	470 ft ²	—	—
Kitchen / Dining	190 ft ²	—	—	—
Media Room	—	—	400 ft ²	—
Bathroom	—	25ft ²	—	—
Master Bedroom	—	—	—	165 ft ²
Master Bathroom	—	—	—	35 ft ²
Bedroom 2	—	—	—	180 ft ²
Bathroom	—	—	—	20 ft ²



- 1_Entry / Foyer
- 2_Living
- 3_Dining
- 4_Kitchen
- 5_Bedroom
- 6_Office / Media Room
- 7_Powder
- 8_Bathroom
- 9_Exterior Patio
- 10_Pantry / WD
- 11_Mech.
- 12_Deck / Balcony



Entry to the **Crank house** occurs through a front porch that is shaded by the shifted floor of the bedrooms above. An inviting space at the heart of the house, the living room offers views in three directions as well as a door leading to the back yard. Its exposure on three sides allows the living room to be opened up to cross breezes, connects it to views, and drenches it with sunlight throughout the day. Half a level down, the kitchen is designed with convenience in mind. Everything is within reach in a simple layout of built-ins and a floating countertop meant for intimate family gatherings or large parties. A portion of the space can be used for dining, while the entire room opens visually to the private court beyond.

At the very center of the house is a core containing two and a half bathrooms, a kitchen pantry, and storage for the bedrooms. The stair circulates around the perimeter of these functions, connecting some rooms visually and separating others for privacy. One half-flight up from the entrance is a media room, a large space with views in three directions. It can hold family functions or a home-office. Another half-flight up are the two bedrooms with two full baths. This floor has access to a balcony at the level of the treetops. The master bedroom suite has an overlook to the media room, a large bathroom soaked with light from clerestory windows above, and generous closet space.



over, under

over,under is a Boston-based multi-disciplinary studio for architecture, urban design, interiors, graphic identity and publications. They embrace process, diversify specialization, work elastically and smartly, look for opportunities through research and investigation, and are pragmatic idealists.