



a web-based modern home design delivery service. visit [Hometta.com](http://Hometta.com)

## Food and Water House

The Food and Water house proposes to strengthen the symbiosis between property ownership and environmental resources such as earth, water, wind, and sunlight. The house is divided into three distinct one-story pavilions linked by covered walkways and variable shed roofs. The configuration maximizes sunlight exposure, cross-ventilation, and rainwater harvesting while geothermal coils drive the radiant cooling and heating. Roof overhangs reduce summer solar gain while clerestory windows create large luminous spaces.

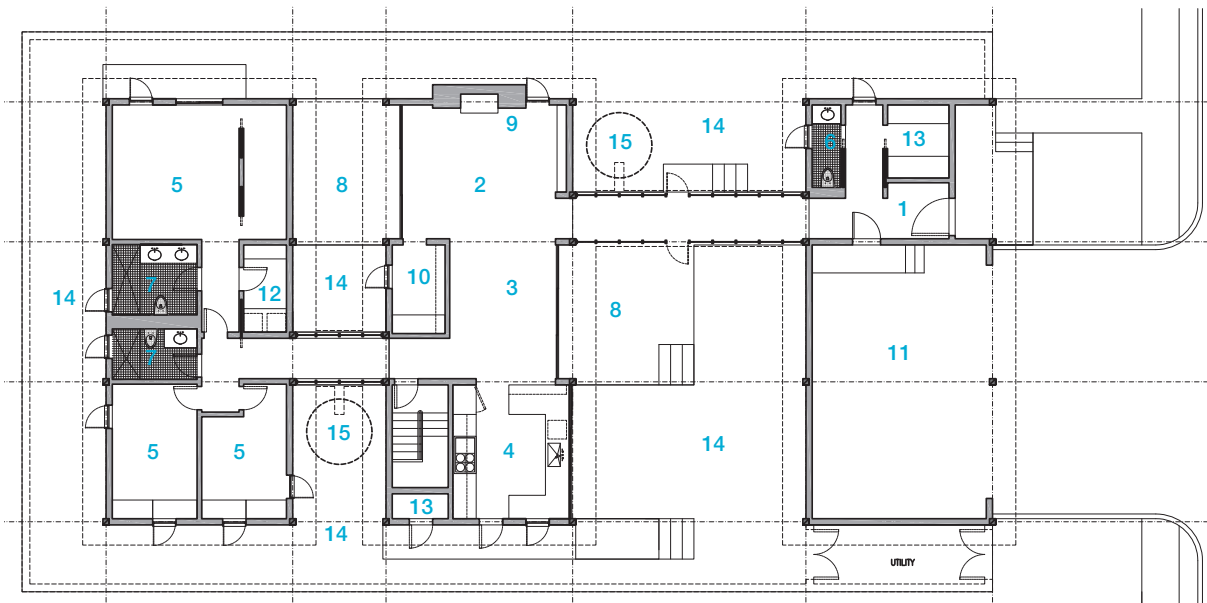
The easily accessed vegetable garden is a functioning extension of the kitchen while the wooden decks extend the living and dining spaces through the use of large sliding glass doors. The 2,200-square-foot house features three bedrooms, three bathrooms, a two-car garage, a gas fireplace, and a 200-square-foot basement. The house fits within a typical 60' x 120' suburban lot with standard setbacks but can be easily modified for other lot sizes.

Room	1st Floor	2nd Floor
Living	254 ft <sup>2</sup>	—
Dining	173 ft <sup>2</sup>	—
Kitchen	164 ft <sup>2</sup>	—
Study	55 ft <sup>2</sup>	—
Powder	26 ft <sup>2</sup>	—
Bedroom 1	118 ft <sup>2</sup>	—
Bedroom 2	131 ft <sup>2</sup>	—
Bathroom	50 ft <sup>2</sup>	—
Master Bedroom	268 ft <sup>2</sup>	—
Master Bathroom	68 ft <sup>2</sup>	—

**2,225 SF (95'x 45')**

3 bedrooms

2.5 bathrooms



0' 5' 10' 20'

FLOOR PLAN

- 1\_Entry / Foyer
- 2\_Living / Family
- 3\_Dining
- 4\_Kitchen
- 5\_Bedroom
- 6\_Powder
- 7\_Bathroom
- 8\_Porch / Deck
- 9\_Fireplace
- 10\_Den / Office / Studio
- 11\_Garage
- 12\_Laundry
- 13\_Storage
- 14\_Garden
- 15\_Cistern



As you approach the **Food and Water House** from the street, the Food and Water House presents itself as a simple pavilion with a 2 car garage and front door. The exterior is clad in 24" vertical wood panels painted a light warm grey. By foot, one enters the first pavilion on an elevated wood porch followed by a small mud room with a modest bathroom. By car, a Geoblock® grass drive leads to a the garage. A covered breezeway, which can be easily closed, connects the first and second pavilion, leading to a large living room with wooden bookshelves, high ceilings with exposed wooden rafters, and a large gas fireplace. Both the living and dining rooms feature clerestory lighting and large sliding glass doors which open to wooden decks with retractable awnings, creating indoor/outdoor spaces with relaxing cross-breezes. A small private study is accentuated by an intimate side garden. The kitchen overlooks the large vegetable garden which is easily accessed by a side porch with ample tool storage and gated utility yard while the basement is accessed by a concealed stair behind the kitchen. The light gray aluminum high-reflectance roof reduces heat gain in the house and directs rainfall to cisterns for garden irrigation. The roof can also easily be retrofit for photovoltaic cells. One steps-up into the bedroom pavilion, accessed via a second breezeway. This 3 bed, 2 bath, and laundry suite features privacy, sunlight, and cross-breezes while the master bed has an intimate private deck. The wooden floors in all the pavilions have integrated radiant heating and cooling to optimize thermal comfort.

## Studio Terpeluk

Studio Terpeluk strives to balance sustainable technologies with craftsmanship while remaining sensitive to landscape and history. The firm believes that every successful project requires rigorous attention to detail at all scales, from the urban to the tactile, and a healthy interdisciplinary exchange between designer, engineer, and craftsman.

Brett's firm Studio Terpeluk, established in 2008, designs small to medium scale residential and commercial projects as well as exhibits and furniture. Prior, he worked for over ten years with Italian architect Renzo Piano in both Genoa, Italy, and San Francisco, California. He has seen the completion of several projects including the restaurant Farina in San Francisco, the inaugural exhibits for San Francisco Planning and Urban Research Center, and exhibits for Slow Food Nation. Brett has taught in Italy, University of Berkeley's School of Architecture, and the California College of the Arts. He received his Bachelor of Arts from Princeton University and Master of Architecture from Rice University.

